



**APRIL 26 - MAY 12**

BCF BAINBRIDGE  
Community Foundation

THE  
MAGGI ROGERS  
FUND

ARTSFUND 

**PREVIEW NIGHT**

 **KCTS9**



 ONE CALL FOR ALL

 **ACE** Hardware  
Bainbridge Island

**APRIL 25**



# CONTENT ADVISORY

At BPA, we believe in pushing creative boundaries to bring important stories to life to expand our understanding of humanity. It's equally important that our audience's experience remains a positive one. With this in mind, we want to ensure you are fully informed about this show's content.

## **This production contains the following:**

- **Adult Themes:** The show contains mature themes including sexual content and references.
- **Strong Language:** There is the use of strong language and slurs that some may find offensive.
- **Nudity:** This production does include some nudity.
- **Alcohol and Drug Use:** Depictions of alcoholism and drug abuse are present in the storyline.
- **Violence and Abuse:** The show includes scenes of violence, abuse, and domestic violence.
- **Sexual Content:** Sexual references and suggestive scenes and choreography are part of the narrative.
- **Anti-Semitism and Racism:** As the plot involves the rise of the Nazi party, there are themes of anti-Semitism, racism, and Nazi symbolism.
- **Sensitive Topics:** The show contains sensitive topics, such as abortion.
- **Political Extremism:** Depictions of political extremism and the rise of the Nazi party.
- **Flashing Lights and Loud Noises:** The production includes flashing lights and loud noises that could be disturbing or may trigger seizures for people with photosensitive epilepsy.

# CABARET

Book by Joe Masteroff, Based on the play by John Van Druten, stories by Christopher Isherwood, and Music by John Kander, Lyrics by Fred Ebb

CABARET is presented by arrangement with Concord Theatricals on behalf of Tams-Witmark LLC. [www.concordtheatricals.com](http://www.concordtheatricals.com)

## RUNTIME

**ACT 1:** Approximately 95 minutes

**INTERMISSION:** 15 minutes

**ACT 2:** Approximately 45 minutes

## CURTAIN CALL

As is conventional for productions of Cabaret, there will be no curtain call at the end of the performance.

In lieu of a curtain call, if you wish to share your appreciation to the volunteer cast, you are encouraged to stay after the performance to greet cast members in the lobby.

If you would like to share messages of appreciation with the cast and artistic team, we encourage you to reach out to the Box Office, and we will be happy to share messages on your behalf.

# THE CREW

<b>Director</b>	Jessica Low
<b>Production Manager / Producer</b>	Deirdre Hadlock
<b>Music Director</b>	Shawna Avinger
<b>Choreographer</b>	Annalisa Brinchmann
<b>Assistant PM / Backstage Manager</b>	Eliza Lane
<b>Technical Director</b>	Dave Tier
<b>Sound Engineer</b>	Matt Hadlock
<b>Scenic Designer / Construction</b>	Erik Furuheim
<b>Costume Designer</b>	Justine Pogue
<b>Costume Assistant</b>	Meloni Courtway
<b>Lighting Designer</b>	Rob Falk
<b>Fight Choreographer &amp; Intimacy Coordinator</b>	Lee Ann Hittenberger
<b>Stage Crew</b>	August DeRonghe Kat Briones

## SPECIAL THANKS

Renton Civic Theater, Reboot, Tacoma Musical Playhouse, Seattle Gilbert and Sullivan Society, Lisa Frankel, Kristi Ann Jacobson at Bremerton Community Theater, Scot Sexton, Will Sanders, Katie Wallace, Casey Raiha, Elizabeth Faye, Just Us Girls & Co.

### Follow Spot Operators

Nina Wilson, Shaun Baesman, Trent Craighead, Dominique Cantwell, Robert Craighead, SueEllen Van Duyne, Jamie Berg

### Scenic Painters

Deborah, Chris, Shaun Baesman, Carol White, Mindy Ryan, Lydia Ryan, Baeven Hoyt, Denise Harris, Celeste Harris, Ann Cook, Marilyn Dearsley, Nancy Wilkins,

### Scenic Construction

Dave Tier, Bill O'Neill, Nina & Ben Wilson

### Stitchers

Kathy Ellison, Sabrina Fiander, Dominique Cantwell



## DIRECTOR'S NOTES

*Cabaret*, adapted from John Van Druten's play *I Am a Camera* and Christopher Isherwood's novel *Goodbye to Berlin*, is set in 1929-1930 Berlin. It weaves together the lives of American writer Cliff Bradshaw, British singer Sally Bowles, Kit Kat Klub performers and patrons, Fräulein Schneider, a German boarding house owner, and her suitor Herr Schultz, a Jewish fruit vendor. Against the backdrop of the rise of Nazi Germany, the characters confront complacency, fear, denial, and indifference, as they grapple with the consequences of ignoring the growing threats of racism, anti-Semitism, and authoritarianism.

As we watch the characters navigate their lives in this horrifying time period, *Cabaret* serves as a stark reminder of the dangers of complacency and indifference. It prompts us to confront the uncomfortable truths of our society today and to resist passivity in the face of injustice. With political extremism and corruption, the Israel-Hamas conflict, rising anti-Semitism, white supremacy, neo-Nazism, the stripping away of human rights, and other pressing issues- all on the eve of our upcoming election- the musical urges us to stay vigilant and take action.

The cast, crew, and creative team have been hard at work bringing this important production to life. Let us not only entertain, but also provoke thought, prompt conversation, and inspire action. We must stand against hatred and injustice, and we must never forget the lessons of the past.

Thank you for joining us on this journey.

Jessica Low, Director



### ABOUT JESSICA LOW

Jessica Low is a Seattle based director, choreographer, performer and arts educator. She has a BA in Drama from the UW and was the 2014 Gregory Award recipient for Outstanding Choreography for *The Wild Party* produced by Sound Theatre Company. Credits: *The 5th Avenue*, *Village Theatre*, *ACT*, *Arizona Theatre Company*, *Harlequin Productions*, and *inD Theatre*. [www.jessicaannlow.com](http://www.jessicaannlow.com)

# THE BAND

**Music Director** Shawna Avinger

**Piano** Will Sanders

Max Chastain

William Bryant

**Drums** Scot Sexton

Chris Monroe

**Violin** Luis Nenninger

Lin Chen

**Cello** Erika Feibig

Janice Lee

William Spengler

**Reed** Cody Clark

**Trombone** Chris Laughbon

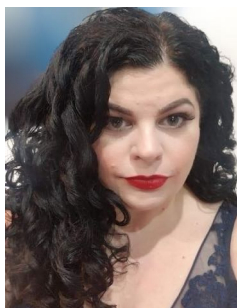
**Bass** Peter Vosshall

Ethan Sobotta

**Trumpet** Kevin Slota

Casey Whitman

**Additional music vocal  
arrangements and orchestrations** Brandon Peck



**Shawna Avinger** / Music Director

Shawna teaches vocal technique, music theory, music directs, and performs all kinds of vocal music. Shawna founded the non profit Viva Vocalists in 2009 and serves as education director for The Esoterics. Many thanks to my dad, John Avinger, for teaching me the joy of making music!

## MEET THE CAST



### **Bo Mellinger as Emcee**

Bo's love for *Cabaret* started while attending AMDA - NYC all the way back in 2007 and the love has grown exponentially with this dream role. Previously onstage with BPA in *Priscilla, Queen of the Desert*, he's been performing in Seattle for the last 14 years. If you'd like to see him again, join him and Seattle Public Theatre in *Titanish* at the Bathhouse Theatre in Greenlake in August/September! Love to Justin, Pearl Mae, Jordyn, Kait, Mom & Dad. And to all storytellers and artists, past, present, and future, this performance is for you.



### **Talena Laine as Sally Bowles**

Hello, darlings! Telling Sally's story has been one of the greatest honors and joys of Talena's theatre career. All her love to this once in a lifetime cast, and deep gratitude to Chris and Bo for sharing their hearts so freely with her on stage. You may have also seen Talena in BPA's *Beauty and the Beast* (Babette) or *Pride & Prejudice* (Mr. Collins/Wickham/ Miss Bingley.) Next up, Titania in *A Midsummer Night's Dream*! Extra love to her favorite Kit Kat, Reed. @talenalaine



### **Chris Clark as Cliff Bradshaw**

You might remember Christopher Clark from BPA's inaugural show in the Buxton Center, *The Prom*. He couldn't be more excited to join the cast of *Cabaret*, especially at this time, in this cultural moment. Other recent credits include *Wolf Play* (ACT), *Book of Will* (Taproot) and BPA's *The Prom*. His first feature film, *Ingress*, was filmed on Bainbridge and releases to streaming platforms soon. Special thanks to Talena—shaping these characters together has been pure joy. And most of all to Mary, who makes all worlds possible.



### **Michelle Lorenz Odell as Fraulein Schneider**

Michelle is thrilled to be back on the BPA stage in this remarkable production! She has been performing with professional and community theaters across the PNW for over twenty years. Past roles include Eva Peron in *Evita*, Rona Peretti in *25th Annual...Spelling Bee*, Fantine in *Les Miserables*, Sally Brown in *You're a Good Man, Charlie Brown*, and M'Lynn in *Steel Magnolias*.

## MEET THE CAST



### **Adam Othman as Herr Schultz**

Adam is honored to be part of this talented *Cabaret* family. While this is his first time performing at BPA, his work has recently been seen directing *Beauty and the Beast*. Adam teaches acting and filmmaking at Seattle Prep and loves photography and travel.



### **Kendra Truett as Fraulein Kost**

Kendra is thrilled to be back at BPA! Her most recent shows include *Beauty and the Beast* and *The Prom*. Kendra has been lucky enough to perform in theater, bands, and burlesque, and she is her happiest on stage. She thanks her family for their support!



### **Max Lopuszynski as Ernst Ludwig**

Previously at BPA: *Big Fish*, *Peter and the Starcatcher*. A Seattle-based actor and singer, his recent credits include *Anyone Can Whistle* (Reboot Theatre), *Sunday in the Park with George* (SecondStory Repertory), *Sweeney Todd* (Vashon Repertory Theatre), and *The Music Man* (Tacoma Musical Playhouse). For Dziadek. @MaxLopuszynski



### **Ed Courtway as Max**

Ed is excited to be back on stage at BPA after *The Prom* being first return to the stage since his debut in a 1983 Church Christmas pageant, where he was the stable. He is beyond grateful to the talented and beautiful cast and production team for their kindness, patience, and tutelage.



## MEET THE CAST



### **Meagan Kirby as Frenchie, Sally U/S**

Meagan is so excited to be part of her first BPA show! Other credits include *Sweeney Todd* (Vashon Island), *Miracle on 34th St Radioplay* (Oregon Cabaret Theatre), *Dancing at Lughnasa* (Collaborative Theatre Project), and *Gentleman's Guide to Love and Murder* (Camelot Theatre). Much love to Casey, Ramona, Mom & Chris.



### **Colleen Gillon as Texas**

Colleen ist sehr glücklich to be up in the Klub with this fantastisch cast and crew. Audiences may recognize her from past BPA shows including *The Prom* (Angie), *Drowsy Chaperone* (Janet), *Spelling Bee* (Olive), and many more! She is grateful to dive bar karaoke nights for preparing her for this amount of floor work.



### **Elizabeth Dangelo as Fritzie**

Elizabeth is so happy to be back on stage at BPA! Favorite past roles include Lucy in *Jekyll and Hyde*, Fiona in *Shrek the Musical*, Miss Shields in *A Christmas Story*, and Ocean in *Ride the Cyclone*. Much love to her friends and family. Hope to see you back at the Kit Kat Klub soon!



### **Laura McFarlane as Lulu**

Laura is thrilled to be in her first show at BPA! Favorite past roles include Olive in *25th...Spelling Bee*, Helene in *Sweet Charity*, Nina in *Vanya & Sonia & Masha & Spike*, Hope in *Something's Afoot* and Shelby in *Steel Magnolias*.

## MEET THE CAST



### **Jo Johnson as Rosie**

Jo is excited for their second time on the BPA stage. Despite being an engineer by day, Jo has crawled their way out of the office to perform for you today! Jo is very grateful for the hard work of the lovely cast, production staff, and crew that went into telling this compelling story.



### **Philippa Myler as Helga**

Philippa is thrilled to return to BPA for *Cabaret!* Her credits include *The Rocky Horror Show* (BPA), *Bye Bye Birdie*, and *South Pacific* (Ovation!). Philippa was a freelance dancer, teacher, and choreographer before transitioning into musical theater. She thanks her family and her cat, Bogey, for their support.



### **Reed Viydo as Victor, Cliff U/S**

Reed feels like the luckiest Kit Kat boy in the world to share the stage with so many talented friends and storytellers. He was last on BPA's stage as *Gaston* in *Beauty & the Beast* and is thrilled to be back. Thank you to all his friends and family who made the trek from Seattle and beyond to be here! He is so proud of his wife and best friend Talena for all the hard work she has poured into this performance as she continues to inspire him everyday.



### **Sriram Kanduri as Herman, Ernst U/S**

After a six-year hiatus, honing his skills and craft at the American Musical and Dramatic Academy in NYC, Sriram is super excited to make his BPA and PNW theatre scene debut as a Kit Kat Boy! He looks forward to entrancing you within the walls of the Kit Kat Club!

## MEET THE CAST



### **Joey Chapman as Bobby**

This is Joey's ninth production with BPA. Previous BPA performances include *The Prom*, *Rocky Horror*, *Mamma Mia*, *Xanadu*, *Priscilla*, *Little Mermaid*, *Drowsy Chaperone*, and *A Chorus Line*. A proud BPA Board President, Joey sends love to his husband Christopher, Mom, friends, and family who always support him.



### **Shane Petrus as Hans**

Originally from Honolulu, Hawaii, Shane is thrilled to be in his first show with BPA. He thanks his friends who encouraged him to return to the stage since last performing in *Legally Blonde* (RTOP) in 2018. Shane sends love to his partner, Kris, and their cat Duke.



---

### **Lee Ann Hittenberger / Intimacy/Fight Choreographer**

Ms Hittenberger is a Renaissance woman. Her work in fight/intimacy & dance choreography, directing, and costume design have been seen throughout the Pacific Northwest. She is an advanced actor combatant (certified in 8 weapon styles) with the Society of American Fight Directors. She holds a degree from Dell Arte International School of Physical Theater and is a teaching artist. She is thrilled to be returning to BPA and honored to work with Jessica, Deirdre and this generous cast of Cabaret.



### **Annalisa Brinchmann / Choreographer**

Annalisa Brinchmann (she/her) is delighted to be working with Bainbridge Performing Arts for the first time! Annalisa has recently worked with the Woodland Park Players, where she choreographed *Spamalot* and co-choreographed *Disenchanted* and *Nice Work if You Can Get It*.

Annalisa has been fortunate enough to perform with the Seattle Opera, Village Theater and Leavenworth Summer Theater.

# NON PROFIT SPOTLIGHT

At Bainbridge Performing Arts, we aim to feature the incredible nonprofit organizations doing amazing things in and around our community.

---

Since 1994 (30 years!), **Island Theatre Bainbridge**, a 502(c)3 non profit, has been dedicated to providing low-cost, high quality dramatic entertainments for adult audiences and participants through three main programs: Island Theatre at Your House (YoHo), Island Theatre at the Library and the annual Island Theatre Ten-Minute Play Festival (August 22-24). Learn more at [www.islandtheatre.org](http://www.islandtheatre.org).



The poster for the Island Theatre Bainbridge Ten-Minute Play Festival 2024 features a dark blue background with a white cloud and a black fork. The text includes the organization's name, the festival title, dates, location, and event details.

**island theatre**  
BAINBRIDGE

Ten original plays  
by Kitsap  
Playwrights

**Ten-Minute Play Festival** 2024

**August 22-24**  
At the Buxton Center

**Actor Auditions**  
May 4 + 5

**Meet the Playwrights**  
August 7 - Bainbridge Library

[www.islandtheatre.org](http://www.islandtheatre.org)

'24 Theme:  
**Hunger**

Logos for Bainbridge Island, BCF Community Foundation, and One Call 929 are also present.

**Ovation!'s** mission is to create and present quality theatrical and arts education experiences by and for our community, which reinforce our shared commitment to artistic excellence. As a volunteer-led organization, we achieve this by engaging talented members of our community as a united force, working together to reach our goals.



A collage of four photographs showing various theatrical performances and group photos, with the Ovation! logo and contact information in the center.

From mainstage productions and concert shows to our adult choir and camps and classes for kids and adults, Ovation! Performing Arts Northwest is a part of your community!

**Ovation!**  
PERFORMING  
ARTS NORTHWEST

<https://www.ovationmtb.com/>  
<https://www.facebook.com/ovationmtb>  
info@ovationmtb.com



For *Cabaret*, we've chosen four organizations that focus on the art of storytelling: inD Theatre, Island Theatre, Ovation Performing Arts, and The Lesser Known Players. We encourage you to learn more about them at their respective websites and to visit their tables in the lobby.

---

**inD Theatre** produces semi-professional theatrical events that are free and promote social change. Enjoying Talena Laine's *Sally Bowles*? Come see our October 2024 production of "Men on Boats" she's directing. Meanwhile, check out our June production of Tom Stoppard's "Dogg's Hamlet, Cahoot's Macbeth" directed by Tom Challinor. More details: [inDTheatre.org](http://inDTheatre.org).



**The Lesser-Known Players** aim to provide our community with exposure to new, rare, unusual, and/or out-of-mainstream theatrical works. Through these lesser-known works we seek to foster community engagement, dialogue, and understanding of history, politics, and the different ways of living, thinking, believing and behaving in society, and to provide more opportunities for inclusion in the performing arts to the traditionally underrepresented.





### **Recycle Your Program**

Join our sustainability efforts and help us use paper by printing less programs. Return your gently used program after the show to be used again by future patrons!



### **Our new Magnetic Loop System**

enhances auditory clarity for patrons with hearing-aids, transmitting stage audio directly to their devices. Patrons with compatible hearing aids can access this feature by switching their devices to the 'T-Coil' or 'Telecoil' setting. Enjoy crystal-clear sound, immersing you fully in the performance.

### **THE FOUNDERS' ROOM**

**The Founders' Room** is a new sensory-accessible space at the Buxton Center. Patrons now have the option to view performances in this calm, comfortable, and adaptable space. The Founders' room is open for patrons to use as they require during performances, and can also be reserved in advance if you choose. To reserve the Founders' Room, purchase a ticket for each attendee in our general seating area, then notify our box office by phone or email of your preference to access the Founders' Room. You may also contact the Box Office to arrange both at the same time.

Please note, patrons who have reserved the space are not obligated to use it. Both your seats in the main auditorium and the Founders' Room will be available for you to use as you choose. Your experience, your choice. During performances when the Founders' Room is reserved, it will not be available for open use. Please contact our Box Office to enquire about availability.



Trichler Wealth Management Group at Merrill presents

# *A Midsummer Night's Dream*

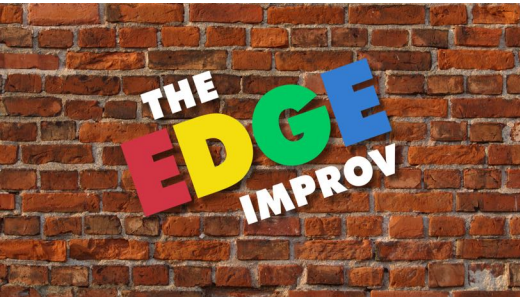
June 28 - July 14  
at The Bloedel Reserve



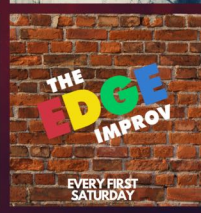
Tickets at [bainbridgeperformingarts.org](http://bainbridgeperformingarts.org)



# COMING SOON



**2024/2025 SEASON TICKETS AT BAINBRIDGEPERFORMINGARTS.ORG**



## SEASON TICKET PACKAGES AVAILABLE SATURDAY, MAY 4



### PREMIERE

\$210 GENERAL ADMISSION  
 \$175 SENIOR/MILITARY/STUDENT  
 INCLUDES: 4 MAINSTAGE PRODUCTIONS  
 + 3 BAINBRIDGE SYMPHONY ORCHESTRA CONCERTS



### THEATRE

\$120 GENERAL ADMISSION  
 \$100 SENIOR/MILITARY/STUDENT  
 INCLUDES: 4 MAINSTAGE PRODUCTIONS



### SYMPHONY

\$90 GENERAL ADMISSION  
 \$75 SENIOR/MILITARY/STUDENT  
 INCLUDES: 3 BAINBRIDGE SYMPHONY ORCHESTRA CONCERTS

\$10 processing fee applied to each package at time of purchase



BAINBRIDGE PERFORMING ARTS

## SINGLE TICKETS AVAILABLE JUNE 4

Tickets to The Edge Improv available now

Subscribe to our email list and follow BPA on Facebook & Instagram @bainbridgeperformingarts

bainbridgeperformingarts.org  
 Box Office: 206-842-8569  
 200 Madison Ave N.  
 Bainbridge Island, WA 98110

